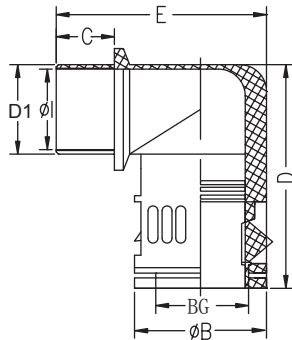


# RCCN 日成BGW型直角型软管接头 Elbow Quick Conduit Connector



螺纹规格: 公制螺纹(Metric)/德制螺纹(PG)

产品材质: 尼龙66(NYLON66)原料制成

产品认证: 欧洲CE,ROHS

防火等级: UL94V-2

颜色种类: 黑色B、灰色G.

工作温度: -40°C至85°C

产品特性: 装卸只需拨插无需工具

备注: 含螺母,不带防水垫片,需外购

Thread:Metric:PG,NPT,G Material:NYLON66

Certificates:CE,ROHS Fireproof rate:UL94V-2

Color:Black-B,Gray-G. Work temperature:-40°C to 85°C

Features:Install or discharge without tools,just insert or output

the conduit Remarks:Come with lock nut,but without

washer, need to buy separately

单位/Unit:mm

Ral9005 Ral7037

型号 Item No.		螺纹规格 Thread	对应软管 Tubing outer BG	螺纹外径 Thread O.D. D1	机板开孔 Panel Mounting Hole	螺纹长度 Thread Length GL	内孔径 Smallest inner I Ø	外径 Largest outer B Ø	长度 Total length H	高度 Total Height E
黑色 Black Ral9005	深灰色 Gray Ral7037									
<b>公制螺纹 BGW-M</b>										
BGW-M12B(BG07)	BGW-M12G(BG07)	M12×1.5	BG-07	12.0	12-12.3	10.0	8.5	17.0	33.5	32.0
BGW-M16B(BG10)	BGW-M16G(BG10)	M16×1.5	BG-10	16.0	16-16.3	10.0	12.0	20.0	36.0	34.0
BGW-M16B(BG12)	BGW-M16G(BG12)	M16×1.5	BG-12	16.0	16-16.3	10.0	12.0	23.0	42.0	37.5
BGW-M18B(BG12)	BGW-M18G(BG12)	M18×1.5	BG-12	18.0	18-18.3	10.0	15.5	23.0	42.0	37.5
BGW-M20B(BG12)	BGW-M20G(BG12)	M20×1.5	BG-12	20.0	20-20.3	10.0	15.5	23.0	42.0	37.5
BGW-M20B(BG15)	BGW-M20G(BG15)	M20×1.5	BG-15	20.0	20-20.3	13.0	13.5	26.5	46.0	44.0
BGW-M20B(BG17)	BGW-M20G(BG17)	M20×1.5	BG-17	20.0	20-20.3	13.0	14.8	29.5	50.0	49.0
BGW-M22B(BG17)	BGW-M22G(BG17)	M22×1.5	BG-17	22.0	22-22.3	12.0	18.0	29.5	50.0	47.0
BGW-M24B(BG17)	BGW-M24G(BG17)	M24×1.5	BG-17	24.0	24-24.3	13.0	18.0	29.5	50.0	49.0
BGW-M25B(BG17)	BGW-M25G(BG17)	M25×1.5	BG-17	25.0	25-25.4	13.0	14.8	29.0	46.0	49.0
BGW-M25B(BG23)	BGW-M25G(BG23)	M25×1.5	BG-23	25.0	25-25.4	13.0	18.0	29.0	50.0	49.0
BGW-M32B(BG29)	BGW-M32G(BG29)	M32×1.5	BG-29	32.0	32-32.4	15.0	24.0	44.0	67.5	67.5
BGW-M40B(BG36)	BGW-M40G(BG36)	M40×1.5	BG-36	40.0	40-40.4	15.0	32.0	52.0	83.0	74.5
BGW-M50B(BG48)	BGW-M50G(BG48)	M50×1.5	BG-48	50.0	50-50.4	16.0	39.0	64.0	88.0	86.5
BGW-M63B(BG48)	BGW-M63G(BG48)	M63×1.5	BG-48	63.0	63-63.4	16.0	53.0	64.0	88.0	86.5
<b>德制螺纹 BGW-P</b>										
BGW-PG7B(BG07)	BGW-PG7G(BG07)	PG7	BG-07	12.5	12.5-12.8	10.0	8.5	17.0	33.5	32.0
BGW-PG9B(BG10)	BGW-PG9G(BG10)	PG9	BG-10	15.2	15.2-15.5	10.0	12.0	20.0	36.0	34.0
BGW-PG11B(BG12)	BGW-PG11G(BG12)	PG11	BG-12	18.6	18.6-18.9	10.0	12.0	23.0	42.0	37.5
BGW-PG13.5B(BG15)	BGW-PG13.5G(BG15)	PG13.5	BG-15	20.4	20.4-20.7	11.0	13.5	26.5	46.0	44.0
BGW-PG13.5B(BG17)	BGW-PG13.5G(BG17)	PG13.5	BG-17	20.4	20.4-20.7	12.0	18.0	29.5	50.0	47.0
BGW-PG16B(BG17)	BGW-PG16G(BG17)	PG16	BG-17	22.5	22.5-22.8	12.0	18.0	29.5	50.0	47.0
BGW-PG21B(BG23)	BGW-PG21G(BG23)	PG21	BG-23	28.3	28.3-28.7	12.0	24.0	37.0	57.0	55.0
BGW-PG29B(BG29)	BGW-PG29G(BG29)	PG29	BG-29	37.0	37.0-37.4	12.0	32.0	44.0	67.5	63.0
BGW-PG36B(BG36)	BGW-PG36G(BG36)	PG36	BG-36	47.0	47.0-47.4	12.0	36.0	52.0	83.0	70.0
BGW-PG42B(BG48)	BGW-PG42G(BG48)	PG42	BG-48	54.0	54.0-54.0	14.0	48.0	64.0	88.0	83.0
BGW-PG48B(BG48)	BGW-PG48G(BG48)	PG48	BG-48	59.3	59.3-54.7	14.0	48.0	64.0	88.0	83.0
<b>公制螺纹 BGW1-M / 防水型</b>										
BGW1-M12B(BG07)	BGW1-M12G(BG07)	M12×1.5	BG-07	12.0	12-12.3	10.0	8.5	17.0	33.5	32.0
BGW1-M16B(BG10)	BGW1-M16G(BG10)	M16×1.5	BG-10	16.0	16-16.3	10.0	12.0	20.0	36.0	34.0
BGW1-M16B(BG12)	BGW1-M16G(BG12)	M16×1.5	BG-12	16.0	16-16.3	10.0	12.0	23.0	42.0	37.5
BGW1-M18B(BG12)	BGW1-M18G(BG12)	M18×1.5	BG-12	18.0	18-18.3	10.0	15.5	23.0	42.0	37.5
BGW1-M20B(BG12)	BGW1-M20G(BG12)	M20×1.5	BG-12	20.0	20-20.3	10.0	15.5	23.0	42.0	37.5
BGW1-M20B(BG15)	BGW1-M20G(BG15)	M20×1.5	BG-15	20.0	20-20.3	13.0	13.5	26.5	46.0	44.0
BGW1-M20B(BG17)	BGW1-M20G(BG17)	M20×1.5	BG-17	20.0	20-20.3	13.0	14.8	29.5	50.0	49.0
BGW1-M22B(BG17)	BGW1-M22G(BG17)	M22×1.5	BG-17	22.0	22-22.3	12.0	18.0	29.5	50.0	47.0
BGW1-M24B(BG17)	BGW1-M24G(BG17)	M24×1.5	BG-17	24.0	24-24.3	13.0	18.0	29.5	50.0	49.0
BGW1-M25B(BG17)	BGW1-M25G(BG17)	M25×1.5	BG-17	25.0	25-25.4	13.0	14.8	29.0	46.0	49.0
BGW1-M25B(BG23)	BGW1-M25G(BG23)	M25×1.5	BG-23	25.0	25-25.4	13.0	18.0	29.0	50.0	49.0
BGW1-M32B(BG29)	BGW1-M32G(BG29)	M32×1.5	BG-29	32.0	32-32.4	15.0	24.0	44.0	67.5	67.5
BGW1-M40B(BG36)	BGW1-M40G(BG36)	M40×1.5	BG-36	40.0	40-40.4	15.0	32.0	52.0	83.0	74.5
BGW1-M50B(BG48)	BGW1-M50G(BG48)	M50×1.5	BG-48	50.0	50-50.4	16.0	39.0	64.0	88.0	86.5
BGW1-M63B(BG48)	BGW1-M63G(BG48)	M63×1.5	BG-48	63.0	63-63.4	16.0	53.0	64.0	88.0	86.5
<b>德制螺纹 BGW1-P / 防水型</b>										
BGW1-PG7B(BG07)	BGW1-PG7G(BG07)	PG7	BG-07	12.5	12.5-12.8	10.0	8.5	17.0	33.5	32.0
BGW1-PG9B(BG10)	BGW1-PG9G(BG10)	PG9	BG-10	15.2	15.2-15.5	10.0	12.0	20.0	36.0	34.0
BGW1-PG11B(BG12)	BGW1-PG11G(BG12)	PG11	BG-12	18.6	18.6-18.9	10.0	12.0	23.0	42.0	37.5
BGW1-PG13.5B(BG15)	BGW1-PG13.5G(BG15)	PG13.5	BG-15	20.4	20.4-20.7	11.0	13.5	26.5	46.0	44.0
BGW1-PG13.5B(BG17)	BGW1-PG13.5G(BG17)	PG13.5	BG-17	20.4	20.4-20.7	12.0	18.0	29.5	50.0	47.0
BGW1-PG16B(BG17)	BGW1-PG16G(BG17)	PG16	BG-17	22.5	22.5-22.8	12.0	18.0	29.5	50.0	47.0
BGW1-PG21B(BG23)	BGW1-PG21G(BG23)	PG21	BG-23	28.3	28.3-28.7	12.0	24.0	37.0	57.0	55.0
BGW1-PG29B(BG29)	BGW1-PG29G(BG29)	PG29	BG-29	37.0	37.0-37.4	12.0	32.0	44.0	67.5	63.0
BGW1-PG36B(BG36)	BGW1-PG36G(BG36)	PG36	BG-36	47.0	47.0-47.4	12.0	36.0	52.0	83.0	70.0
BGW1-PG42B(BG48)	BGW1-PG42G(BG48)	PG42	BG-48	54.0	54.0-54.0	14.0	48.0	64.0	88.0	83.0
BGW1-PG48B(BG48)	BGW1-PG48G(BG48)	PG48	BG-48	59.3	59.3-54.7	14.0	48.0	64.0	88.0	83.0